

# Chaffinch Class



## Physical Development

We will begin thinking about the effects of exercise on our bodies and how important it is to take care of ourselves. We explore moving safely around the playground managing risks and space. The children will continue to develop their fine motor skills, using scissors and practising letter and number formation.



## Communication and Language

The children will expand their vocabulary through the use of traditional texts and practise using story and descriptive language. We will continue to work on turn taking during conversations and listening to others, taking their ideas and opinions into account. The children will also begin talking about themselves and their learning positively reflecting Growth Mindset.

## Understanding the World

The children will explore living things in the environment when visiting the woods and think about the importance of taking care of the environment around us. We will also discuss different ways of life during international week and compare them to our own.

**ICT-** The children will begin learning how to use the computers to retrieve information and think about Internet Safety.



## Expressive Arts

The children will use role play to explore traditional story tales and think about creating props using their imagination. They will experiment with a range of media and textures creating rubbings, constructing house and making gingerbread men.

When painting the children will think about colour mixing.

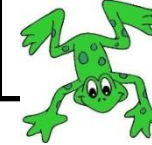


## Mathematics

This half term we will continue to work on our number formation, ordering and recognition to 10 and beyond. We will use 2D and 3D shapes when building houses and explore the beginning stages of basic addition. The children will also practise finding 1 less than a given number and explore time.

## Personal, Social and Emotional Development

Chaffinch class are now beginning to work on independence and taking more responsibility for their learning and behavioural choices. We will think about how our actions can make others feel and explore different ways of solving conflicts. We will also work on expressing our emotions and how to manage our feelings at school.

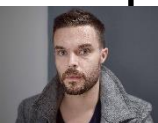


## Literacy

This half term the children will continue to follow the RWI programme, developing their phonics knowledge and using their sounds to read and write simple words. We will begin learning the set 2 sounds and work towards writing a short sentence when labelling.

The children will explore a range of traditional texts when reading and writing, these will include 'The Three Little Pigs', 'The Gingerbread Man', 'Little Red Riding Hood' and 'Jack and the Beanstalk'

Author Focus- Oliver Jeffers.



# Chaffinch Class



## Reminders

**Kiss and Drop-** Thank you for supporting us with Kiss and Drop. Please remember to drop your children at the door to help us to encourage independence.

**Attendance-** Please can I kindly remind you that registration does take place at 8.55am. It is important that all pupils are on time to school as this allows us to settle the class without disturbing morning Phonics sessions.

**Book Bags-** Please make sure that book bags and books are in school every day. Can we also kindly ask you to check the bags for any homework and letters.

**Homework-** Homework will be sent home on a Tuesday and is due back the following Monday. The children now have new homework books, you will find all homework tasks in there.

**Lost Property-** Please check for any missing items in the whole school lost property box, we also have a small box in our cloakroom. All items of clothing should be clearly named.



## Wanted

We are looking for any good quality pre-loved role play items such as costumes, home corner accessories, dolls and props. Any donations would be greatly appreciated.



## Important Dates to remember

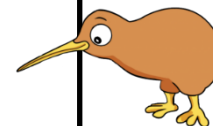
### Parent Teacher Meetings-

Wednesday 31<sup>st</sup> January -3.30pm-5.30pm

Thursday 1<sup>st</sup> February- 5pm-7.30pm

**International Week** - 5<sup>th</sup>- 9<sup>th</sup> February.

**Last day of half term** – Friday 9<sup>th</sup> February

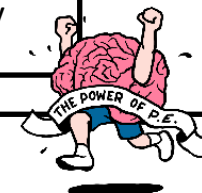


## Parent Helpers

If you would like to come and support the children's learning at school, please see Mrs McClure.

## P.E Days

Our PE days are Tuesday and Thursday. Please make sure your children have a full PE kit in school.



## Yogurt/dessert pots

Please send to school any clean, transparent yogurt/dessert size plastic pots suitable for growing seeds in. These will be needed for planting seeds the week beginning Monday 15<sup>th</sup> January.